

NOTICES TO MARINERS.

(Nos. 509 and 514 to 540 of the year 1908.)

[The Astronomical positions are approximate unless otherwise stated. The bearings are Magnetic, and those relating to lights are given from seaward. The visibility of lights is that in clear weather. Fog signals are sounded during thick or foggy weather unless otherwise stated. The depths are given at low-water ordinary springs. The heights are given above high water.]

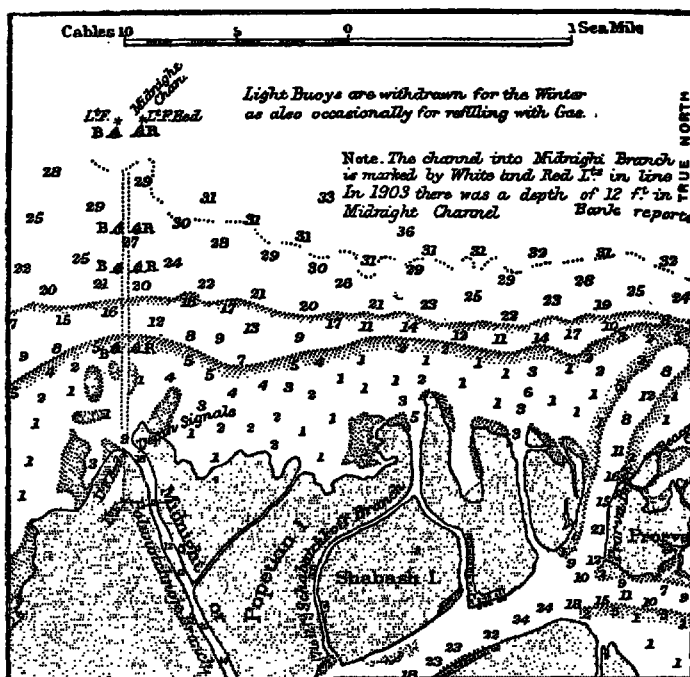
No. 509.—BLACK SEA—RIVER DANUBE.

Midnight and Prorva Branches—Alterations in Dredged Channel Buoys, Lights, and Depth Signals.

Particulars.—The reproduction of a portion of Chart No. 2207, given below, shows the alterations in dredged channel into the Midnight mouth of the River Danube, with the light-buoys, buoys, and leading lights, and remarks for navigating it.

1. Midnight Branch.

Position.—Front Light, lat. $45^{\circ} 28' N.$, long. $29^{\circ} 42' E.$



Depth Signals.—The depth on the bar at the entrance to the dredged channel is indicated as follows:—

Position.—From the yardarm of a mast erected on the eastern side of the entrance to the branch.

Signals.—A large ball indicates 6 feet; a medium ball indicates 1 foot; a small ball indicates 6 inches.

2. Prorva Branch.—A conical buoy has been established at the entrance to the Prorva mouth.

Position.—About $6\frac{1}{2}$ cables N. $21^{\circ} E.$ from Prorva Island Beacon.

Variation.— $2^{\circ} W.$

Charts affected.—No. 2207, River Danube; No. 2835, Delta of the Danube; No. 2231, Cape Kaliakra to Odessa.

Publications.—List of Lights, Part V, 1908, Nos. 1224, 1225; Sailing Directions for the Dardanelles, &c., 1900, page 196; Supplement, 1906.

Authority.—St. Petersburg Notice, No. 38 of 1908.

No. 514.—IRELAND—EAST COAST,
DUBLIN BAY.*Kish Bank Light-Vessel—Replaced by Temporary
Light-Vessel.*

Particulars.—Kish Bank Light-Vessel has been temporarily replaced by a light-vessel carrying a lantern at the mainmast head (from which a white revolving light is exhibited), and

a black ball at the head of the jiggermast as a daymark.

Position.—Lat. $53^{\circ} 19\frac{1}{2}' N.$, long. $5^{\circ} 55' W.$

Chart temporarily affected.—No. 1415, Dublin Bay.

Publications.—List of Lights, Part I, 1908, No. 1114; Irish Coast Pilot, 1902, page 153; and Supplement, 1905.

Authority.—Irish Lights Notice, No. 5 of 1908.